

COORDINATED STORMWATER PERMITTING

ALISA R. RICHARDSON, MS PE

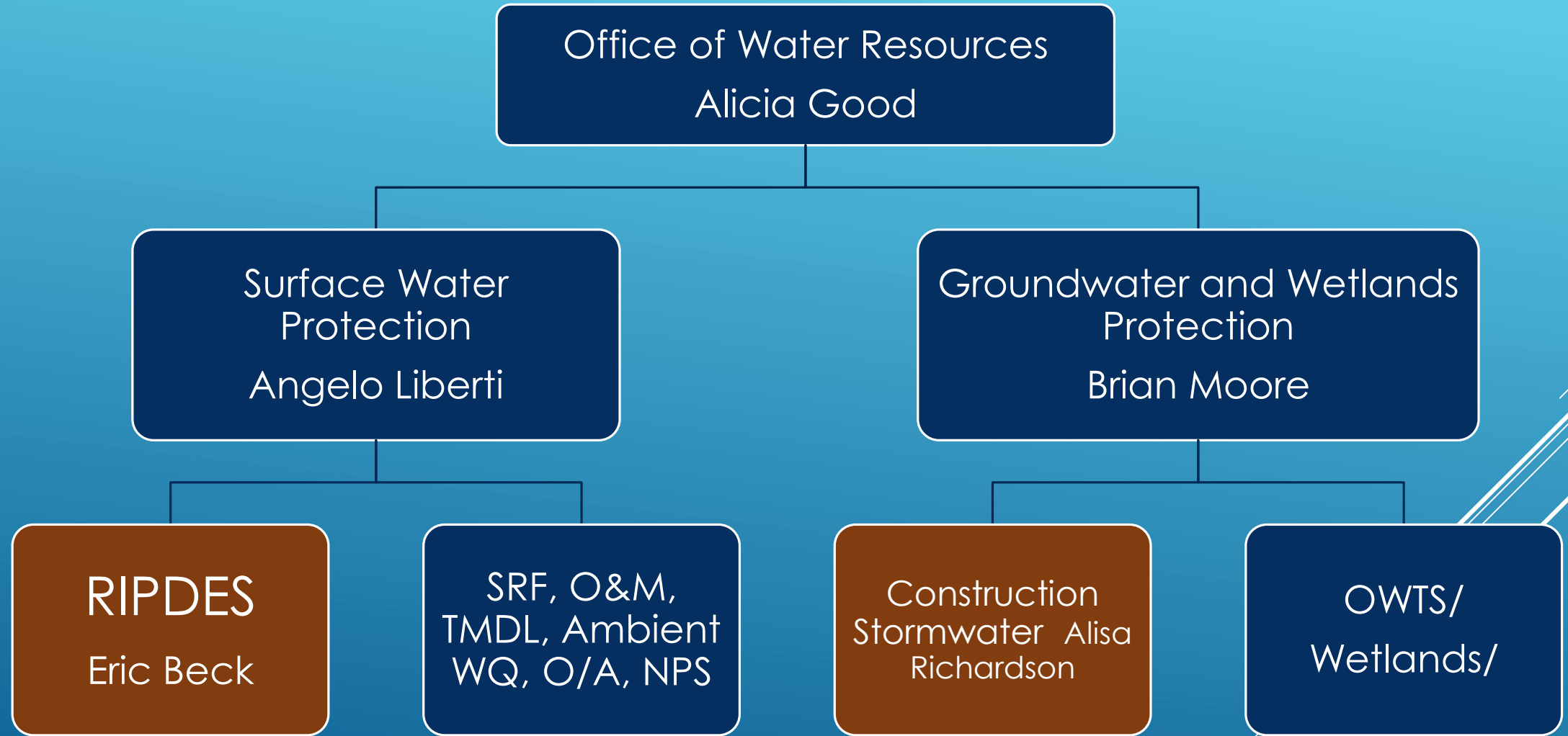
CONSTRUCTION STORMWATER SUPERVISOR

RIDEM – OFFICE OF WATER

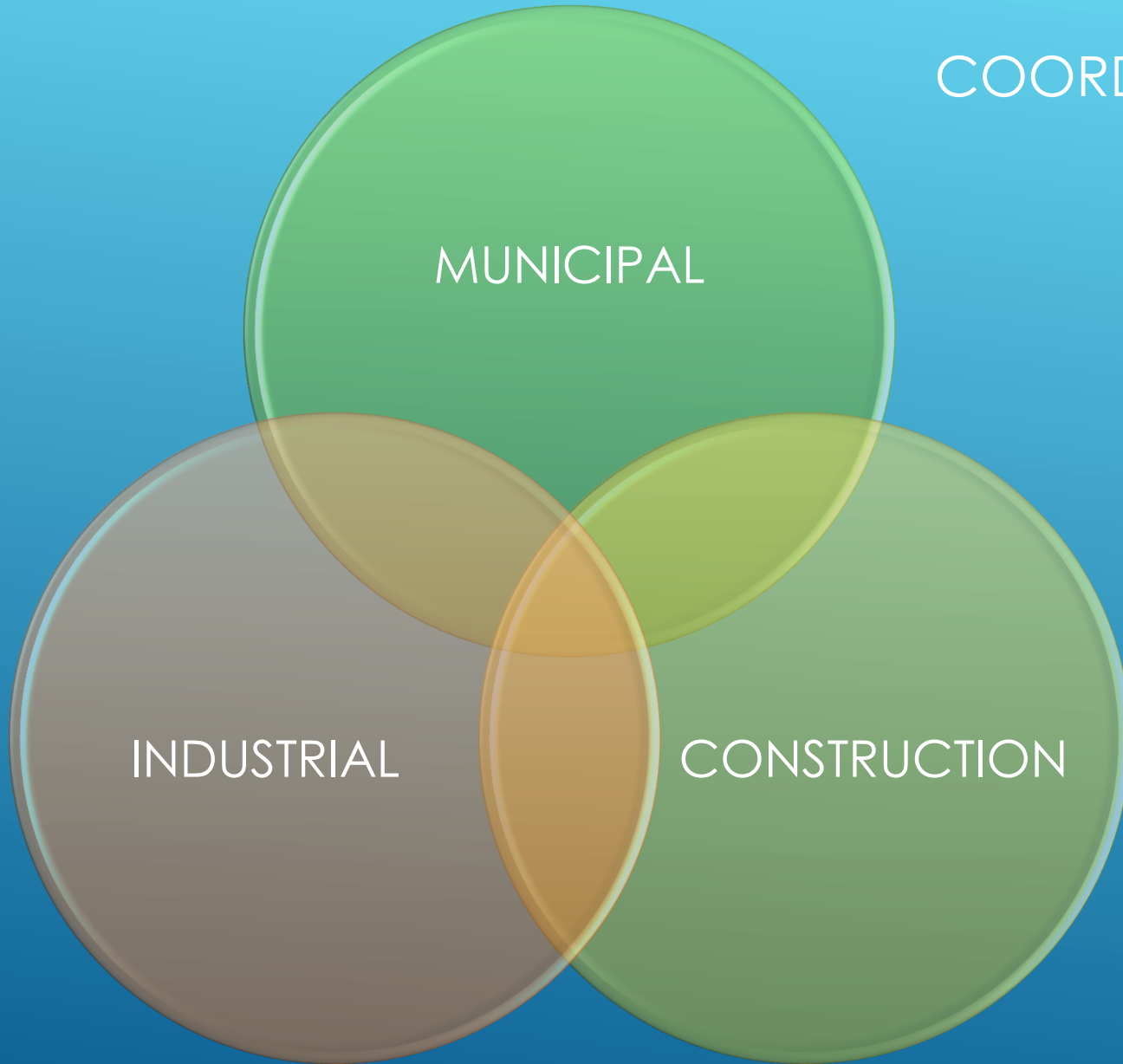
OCTOBER 20, 2015



OFFICE OF WATER RESOURCES RESTRUCTURE



COORDINATED STORMWATER PERMITTING?



COORDINATED STORMWATER PERMITTING?

CONSTRUCTION

State Permitting

- Wetlands
- Water Quality Cert/CRMC
- UIC/GWD
- RIPDES



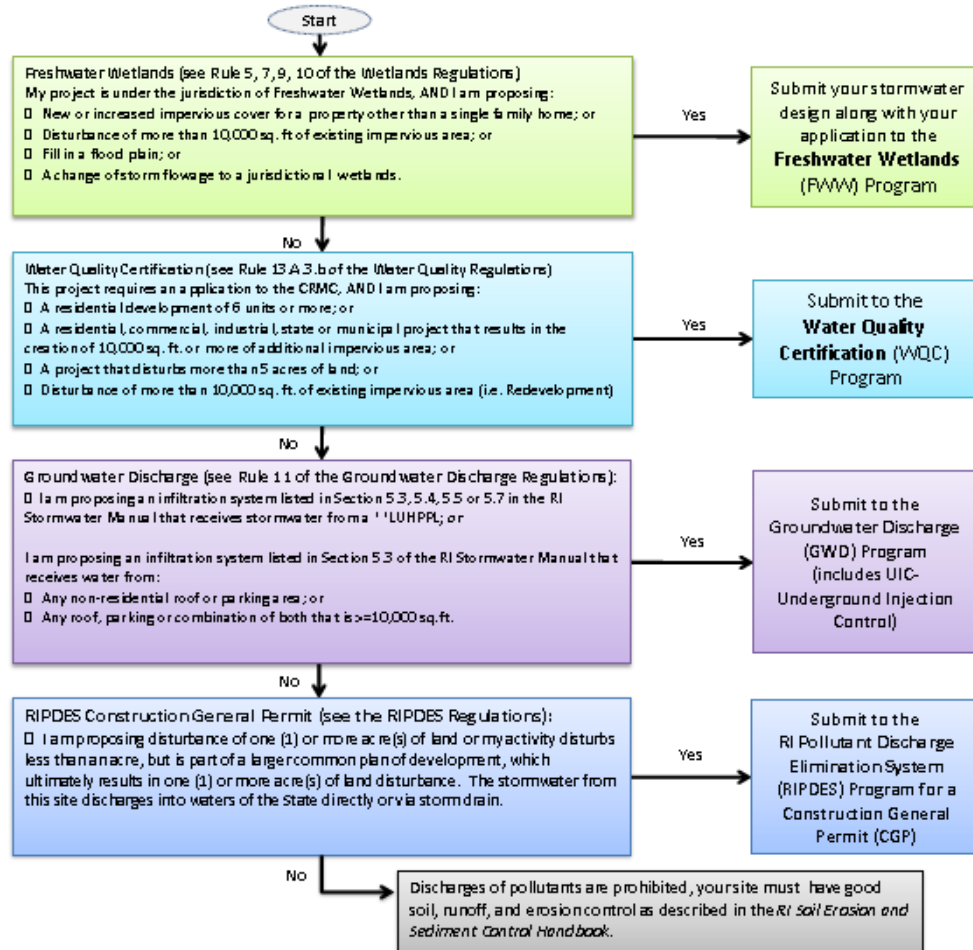


RIDEM Office of Water Resources (OWR)

COORDINATED STORMWATER PERMITTING GUIDANCE

To which program should I submit a permit application and supporting Engineering Documentation?

Only ONE application is needed, even if a project is subject to multiple* permits. Check all that apply and submit to the first applicable program:



*Note: The permit issued pursuant to this flowchart will include any additional authorizations that may be required under other pertinent regulations of the Office of Water Resources (OWR), except that for any industrial type project requiring a Multi-Sector (Stormwater) General Permit (MSGP), a separate MSGP application must also be filed with the RIPDES Program.

** LUHPP = Land Use with a Higher Potential Pollutant Load as defined in the RI Stormwater Manual

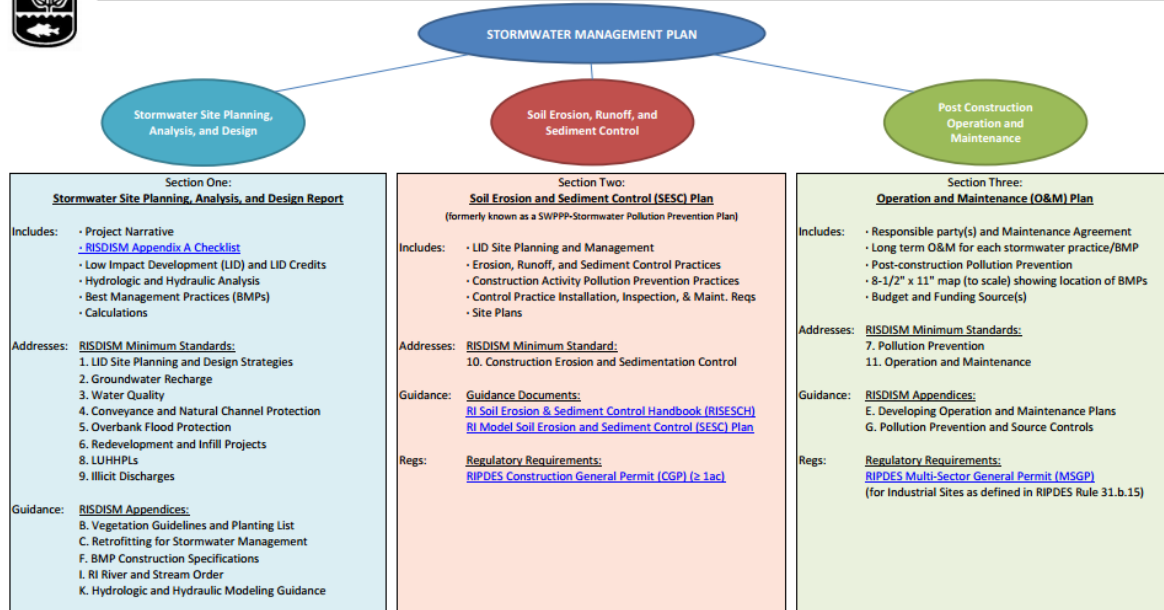
1ST QUESTION IS ALWAYS –
DO I NEED TO COMPLY
WITH THE MANUAL?

REVIEW THIS HANDOUT



STORMWATER MANAGEMENT PLAN GUIDANCE

The three (3) key elements to include in a Stormwater Management Plan for any project subject to the *RI Stormwater Design and Installation Standards Manual* (RISDISM)



ACRONYMS AND ABBREVIATIONS:

BMP - Best Management Practice
CGP - Construction General Permit (RIPDES)
LID - Low Impact Development
LUHHPLs - Land Uses with Higher Potential Pollutant Loads
MSGP - Multi-Sector General Permit (RIPDES)
O&M Plan - Operation and Maintenance Plan

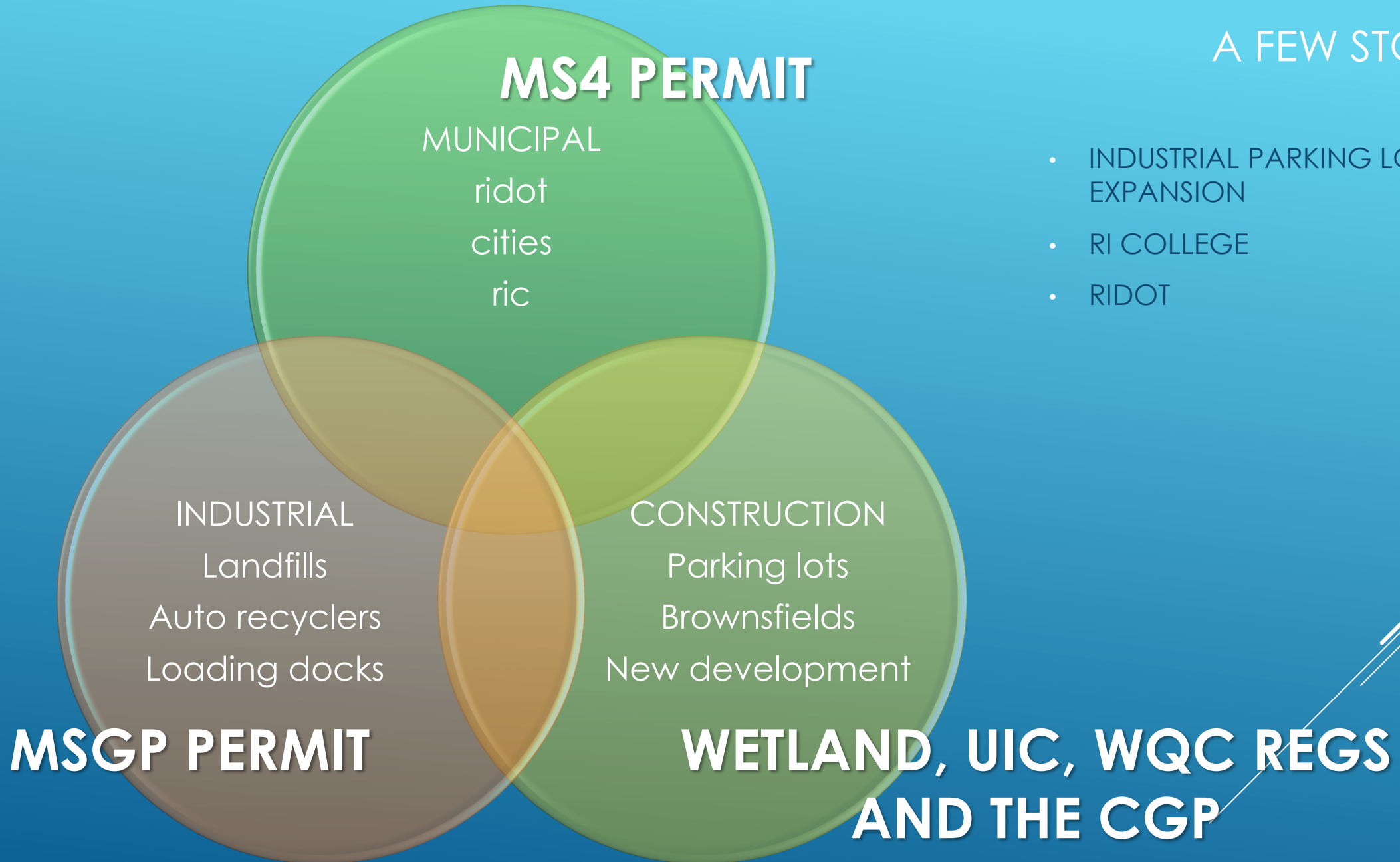
RIDEM - Rhode Island Department of Environmental Management
RIPDES - Rhode Island Pollutant Discharge Elimination System
RISDISM - Rhode Island Stormwater Design and Installation Standards Manual
RISESCH - Rhode Island Soil Erosion and Sediment Control Handbook
SESC Plan - Soil Erosion and Sediment Control Plan
SMP - Stormwater Management Plan

WHAT DO I SUBMIT?

STORMWATER MANAGEMENT PLAN

UNLESS – RIPDES ONLY AND CGP SAYS OTHERWISE

A FEW STORIES





BROWNFIELDS (SUBSURFACE CONTAMINATION)



RAWP-RDL

BUYER

SITE IDEA

PRACTICAL
LAYOUT

PROCESS – STEP 1 – NO SITE DEVELOPMENT
ALLOWED UNTIL RAWP OR RDL IS APPROVED

RED

Hard Cap – no
water on the
soil – lined
BMPs only

YELLOW

Soft Cap or
Direct
Precipitation is
allowed and
BMPs with no
concentrated
flow allowed (i.e.
pervious pavers)

GREEN

All RISDISM BMPs allowed

RED-YELLOW-GREEN

Redevelopment 50% stormwater

RED – No stormwater

Yellow – direct precipitation

Green - Concentrated flow

Note - Yellow can be turned to green in
certain cases.

